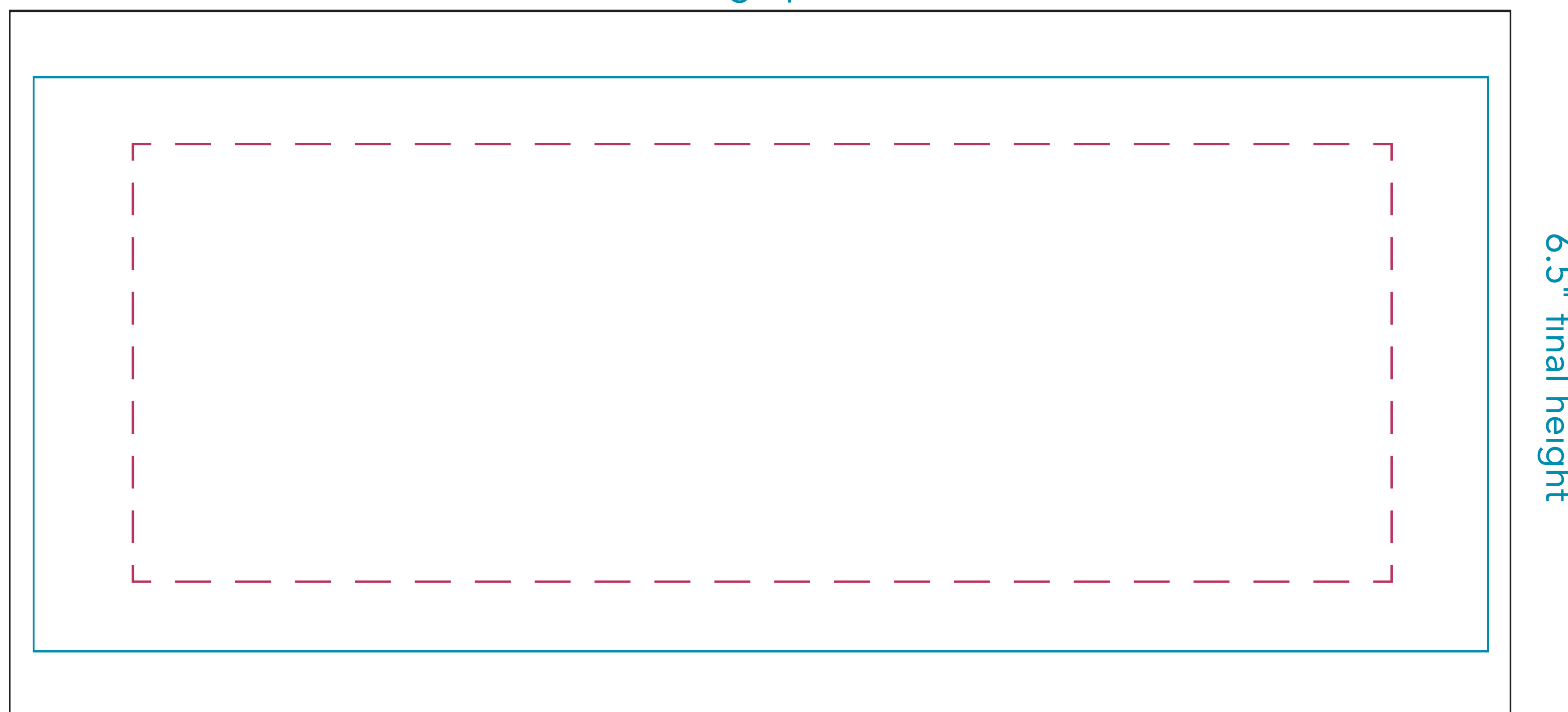


FRONT graphic print size: 27"w × 8"h  
 FRONT final graphic size: 21"w × 6.5"h  
 Live area: 14.25"w × 5"h

The front side is sewn together with the back side of the chairback.  
 Finished size when sewn together with back piece: 21"w × 6.5"h

**FRONT**  
 (where your back rests)



BACK graphic print size: 17"w × 8"h  
 BACK final graphic size: 16.5"w × 6.5"h  
 Live area: 14.25"w × 5"h

The back side is sewn together with the front side of the chairback.  
 Finished size when sewn together with front piece: 21"w × 6.5"h

**BACK**  
 (view from behind)

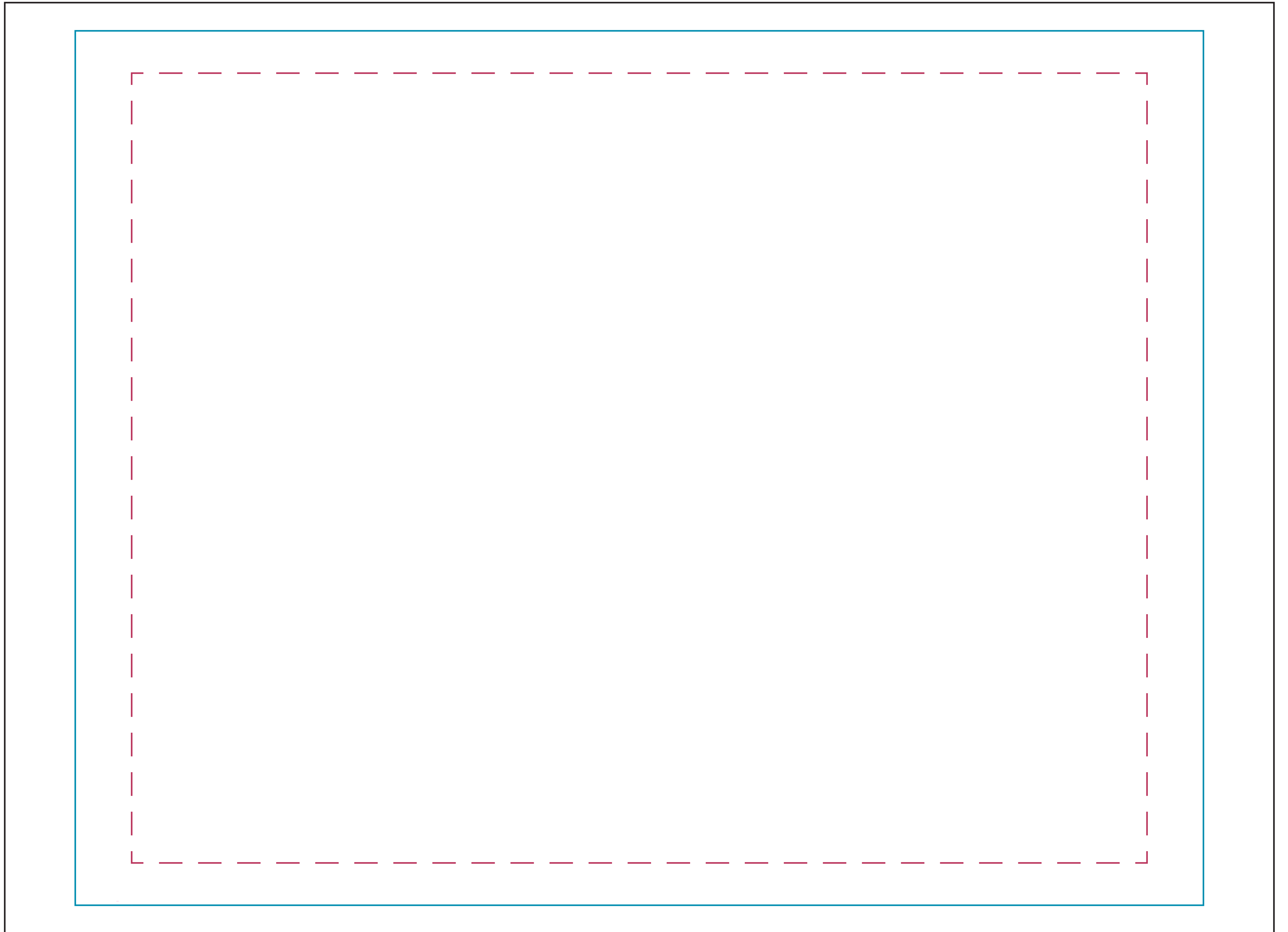
# Director's Chair BACK

## FULL DYESUB

Two graphics sewn together, with the image wrapping around the poles printed on the FRONT graphic (indicated by the green area). The final chair width from edge to edge is 21" wide.

### File Preparation Tips

- Design artwork to print size listed
- Submit layered files in their native program (Photoshop, Illustrator and InDesign are compatible programs)
- Supply all image links to ensure quality
- Keep resolution of images at a minimum 100 ppi (View document at print size to preview image quality)
- Include fonts for any live text OR convert text to outlines
- Maintain a consistent colorspace in artwork and links
- Keep Pantone colormatches indicated as spot colors



15.5" final height

20" final width

# Director's Chair SEAT

FULL DYESUB

Print size: 22.5"w × 16.5"h

Final size: 20"w × 15.5"h

Live area: 18"w × 14"h